



POPULAR VISION PRODUCTS

Ophthalmic Surfacing & Finishing Supplies

GO BEYOND THE EDGE

SURFACING SUPPLIES

Fining Pads for CR-39 & High-Index



Red one step

This pad produces excellent lenses in a wide range of conditions. The aluminum oxide particles are very tightly bonded to the pad, reducing pad loading with almost all lens materials.

76 mm.....**PTR767**
7 petal (w/ pull tab) – 250/roll



Astra one step

This pad is one of the tightest graded silicon carbide pads available today. Consistent removal rates and pristine surface finishes are the major characteristics of the Astra pad.

76 mm.....**PBA767**
7 petal (w/ pull tab) – 250/roll



Black two step – first fine

This high-quality pad yields high stock removal and superior first fine finish. Its flexible pad backing conforms smoothly to the tool ensuring accurate curve reproduction.

76 mm.....**PBF767**
7 petal – 500/roll



3µ Pink two step – second fine

This film-based pad yields superior stock removal and surface quality. The unique mylar backing facilitates an hydraulic “sticking” effect that aids in holding the pad securely to the tool.

76 mm.....**PNK767**
7 petal – 500/roll

Pad Thickness	0.46 mm (compensated)	0.47 mm (compensated)	0.25 mm	0.13 mm
Abrasive	Aluminum Oxide	Silicon Carbide	Silicon Carbide	Aluminum Oxide
Rec. Pin Pressure	14-16 psi or 0.25 bar	14-16 psi or 0.25 bar	14-16 psi or 0.25 bar	14-16 psi or 0.25 bar
Rec. Cycle Time	60-120 sec	60-105 sec	60-120 sec	60-120 sec
Typ. Stock Removal	0.30-0.40 mm (w/ water 50° F)	0.30-0.35 mm (w/ water 50° F)	0.25-0.30 mm (w/ water 50° F)	0.04-0.06 mm (w/ water 50° F)

Fining Pads for Polycarbonate & Trivex®



Red Poly one step

The Red Poly one step pad is very effective and, with consistent removal rates and good surface quality, is a great choice for higher production labs.

76 mm.....**PRL767**
7 petal (w/ pull tab) – 250/roll



Black Ice one step

This extremely aggressive pad yields high, consistent stock removal rates throughout the curve range. Its aggressiveness also makes it useful for “re-fining” other lens materials.

76 mm.....**PTC767**
7 petal (w/ pull tab) – 250/roll



400 Grit two step – first fine

This aggressive, unique pad outperforms conventional first fine pads in stock removal rates and surface quality. It features a flexible backing to ensure precise conformity to the tool.

76 mm.....**PTF767**
7 petal (w/ pull tab) – 500/roll



Red Poly two step – second fine

This pad features tight particle control and a unique open resin –which allows this aluminum oxide pad to remove the fining marks from the first fine and prepares the surface for polishing.

76 mm.....**P2R767**
7 petal (w/ pull tab) – 500/roll

Pad Thickness	0.47 mm (compensated)	0.47 mm (compensated)	0.30 mm	0.26 mm (compensated)
Abrasive	Aluminum Oxide	Silicon Carbide	Silicon Carbide	Aluminum Oxide
Rec. Pin Pressure	14-16 psi or 0.25 bar	14-16 psi or 0.25 bar	14-16 psi or 0.25 bar	14-16 psi or 0.25 bar
Rec. Cycle Time	90-120 sec	120 sec	60-120 sec	60-120 sec
Typ. Stock Removal	0.30 mm (w/ water 50° F)	0.20-0.30 mm (w/ water 50° F)	0.25-0.30 mm (w/ water 50° F)	0.08-0.10 mm (w/ water 50° F)

Polishing Pads



Opti-Yellow

Designed to yield a bright surface finish, this pad's nap structure is dense and erect, resulting in a vigorous polishing action. It is constructed on a “Space Age” backing, which offers easy pad removal and consistent pad thickness.

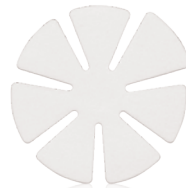
76 mm.....**PTY767**
7 petal (w/ pull tab) – 250/roll



Caramel

Produced with stringent process and quality controls, this pad features a dense nap to yield fast polishing times and minimum shedding. Its woven fabric base is stable, yet flexible, and conforms to the lap.

76 mm.....**PIT767**
7 petal (w/ pull tab) – 250/roll



White Plus

This high density pad produces superb surface quality at low to moderate pressure. It yields excellent curve reproduction, featuring a uniform velveteen nap and a synthetic backing that is firm, yet flexible.

76 mm.....**PWP767**
7 petal (w/ pull tab) – 250/roll

Pad Thickness	0.56 mm (compressed)	0.55 mm (compressed)	0.64 mm (compressed)
Rec. Pin Pressure	20-24 psi (at pin)	20-24 psi (at pin)	18-24 psi (at pin)
Rec. Cycle Time	CR-39 & High Index: 2-3 min Polycarbonate & Trivex®: 4-7 min	CR-39 & High Index: 3-4 min Polycarbonate & Trivex®: 4-7 min	CR-39 & High Index: 3-4 min Polycarbonate & Trivex®: 4-7 min
Rec. Polish Temp.	50-60° F	50-60° F	50-60° F

Plastic Laps



Our high-quality, economical plastic laps are molded under extremely high pressures to ensure a solid, pit-free surface throughout the tool body.

2.75x8” base.....**SPL28**
3.25x6” base.....**SPL326**

Plastic Lens Polish

Aspire™

This high performance polish is ideal for both digital and traditional plastic lens polishing. It provides high removal rates while producing superior, haze-free surface finishes. Aspire flows easily and does not cling to machinery or the lens.

1 gallon bottle HX1829-G 4 bottles/case – 36 cases/pallet	Avg. Particle Size 1.5 micron	pH Factor 3.5	Baumé 22-24°
5 gallon pail..... HX1829 24 pails/pallet	100% freeze/thaw recovery		

Pria dry polish

Pria is a plastic lens polish in powder form. It allows for cost-saving shipping, efficient handling and storage. Pria mixes readily with water to create a highly effective polishing slurry. The Baumé can be customized at initial mixing and adjusted during use.

1.3 kg bag H81D-G 10 bags/case 1 bag makes 1 gallon of polish slurry	Avg. Particle Size 1.8 micron	pH Factor 3.7	Baumé (adj.) 20-30°
100% freeze/thaw recovery			

Americal Plus®

This premium grade, high Baumé plastic lens polish performs well on all types of lens materials. Americal Plus® exhibits particularly fast polishing times and long life on polycarbonate. It works efficiently in central slurry systems as well as single bowl applications.

1 gallon bottle H84-G 4 bottles/case – 36 cases/pallet	Avg. Particle Size 1.7 micron	pH Factor 3.0-4.2	Baumé 24-30°
5 gallon pail..... H84 24 pails/pallet			

100% freeze/thaw recovery

Spirit

Spirit is recommended for high volume labs surfacing all types of plastic lens materials with reliable quality. Cost sensitive labs will find unequalled satisfaction as Spirit outperforms other economy polishes in both stock removal rates and surface quality.

1 gallon bottle H88-G 4 bottles/case – 36 cases/pallet	Avg. Particle Size 2.1 micron	pH Factor 3.5-3.8	Baumé 20-22°
5 gallon pail..... H88 24 pails/pallet			

100% freeze/thaw recovery

Apex

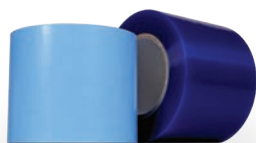
Apex has an unmatched performance-to-price ratio on all lens materials. Producing surfaces suitable for AR coating, it exhibits exceptional stock removal on polycarbonate with flow dynamics that minimize localized heat build-up on high index lens materials.

1 gallon bottle H89-G 4 bottles/case – 36 cases/pallet	Avg. Particle Size 1.7 micron	pH Factor 3.6	Baumé 18°
5 gallon pail..... H89 24 pails/pallet			

100% freeze/thaw recovery



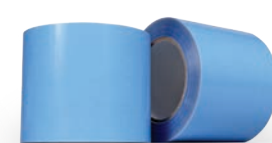
Lens Tape



CeriGuard 600 Plus

CeriGuard Plus is designed to yield optimum performance at an economical price without compromising quality. It exhibits excellent adhesion, clean removal and easy de-blocking.

35 m roll (w/ liner) ST6B
70 m roll (linerless) ST6BS

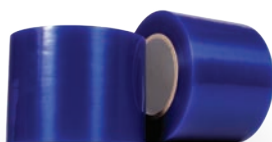


CeriGuard 650 Plus

CeriGuard 650 Plus is designed to yield optimum performance at an economical price without compromising quality. It exhibits excellent adhesion, clean removal and easy de-blocking.

35 m roll (w/ liner) ST6C
70 m roll (linerless) ST6CS

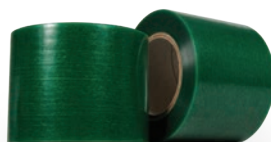
Temperature 117°	Temperature 117°	Temperature 117°	Temperature 117°
Color Blue	Color Clear	Color Green	Color Blue



Sentry XCS

Sentry is a virtually transparent premium lens tape designed for a broad range of applications. It works well with both alloy and wax, in both digital and conventional settings, and its advanced adhesive will not transfer to the lens even after a prolonged period of time.

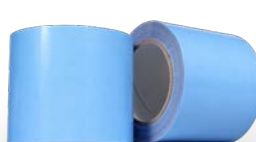
70 m roll (linerless) XCS70
--



Reveal XT

Reveal XT has a unique film and adhesive that works well with all of the alloy temperature ranges. It yields unparalleled stability throughout the surfacing process while protecting the lens surface. The adhesive is easy to remove with virtually no transfer to the lens.

70 m roll (linerless) XG70



OptiGuard Extra

OptiGuard Extra exhibits adequate adhesion and easy removal with flexibility and good conformity over a broad range of curves. It is the perfect product for cost conscious labs.

35 yd roll (w/ liner) STPX

Temperature 117, 141 & 158°	Temperature 117, 141 & 158°	Temperature 117°
Color Blue	Color Green	Color Blue

Alloy



Salem Ultra-Pure 117° alloy

This premium grade, eutectic fusible, bismuth-based alloy is developed to melt at precise temperatures. The manufacturing process assures the purity, consistency and integrity of our alloy with strict adherence to quality control procedures.

Ingot S1171

SURFACING SUPPLIES continued

Conventional & Digital Ophthalmic Coolants

STM630 conventional coolant

STM-630 is a low foam, low surface tension synthetic fluid formulated for conventional plastic lens grinding. Special surfactant chemistry limits subsurface damage to the lens. The formulation also provides corrosion protection and biologic control.

5 gallon pail.....STM630-P
55 gallon drum..... STM630-D
275 gallon tote..... STM630-T

STM640 digital coolant

STM-640 is a low foam synthetic fluid formulated for digital ophthalmic lens grinding. It is designed to provide exceptional corrosion and multi-metal protection of equipment and machinery, and resists biological growth. Innovative chemistry provides lubricity for longer tool life, discourages air entrainment and performs well with centrifuges and media filter systems.

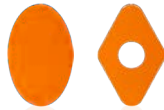
5 gallon pail..... STM640-P
55 gallon drum.....STM640-D
275 gallon tote.....STM640-T

Undyed digital coolant (STM-641) is available. Contact Salem for more information.



FINISHING SUPPLIES

Anti-Slip Protection



Tak™ advanced anti-slip film

This film is designed for use on super hydro/oleo phobic lenses. Its unprecedented adhesion eliminates costly slippage and premature de-blocking during the edging process.

25x38 mm **NTAK-1**
Oval (w/ tab)
25x38 mm **NTAK-3**
Diamond (w/ hole and tab)



Hi-Grip anti-slip film

This film is an all around stable platform for most lenses. It provides a high bond surface for all blocking pads.

25x35 mm **NAS1**
Oval (w/ tab)
25x38 mm **NAS2**
Oval (w/ tab)



Center Protectors

Pre-cut film for extra protection from debris that can accumulate on the edger clamp (ram). These easy to apply and remove protectors can more than pay for themselves by preventing the loss of a single lens due to clamp damage.

30x35 mm **7CTR**
Square



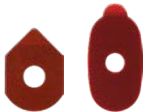
20x30 mm **NCP2**
Oval (w/ tab)
25x35 mm **NCP3**
Oval (w/ tab)



35 mm **NCP26**
Round (w/ tab)

Color	Orange	Clear	Blue	Green	Blue
Number	500/roll	1,000/roll	1,000/roll	2,000/roll	2,000/roll

Blocking Pads



Ruby

This pad has very durable construction and conforms well to all lens curves. Ruby is designed for tougher applications and faster edger processes.

18 mm **NLP42**
Round (w/ hole) - 1,000/roll
17x30 mm **NLP52**
Oval (w/ hole) - 1,000/roll



OH!

This pad is specifically designed to edge the slickest coatings without slipping. OH! has a very stable platform will not yield under high torque pressure.

17x34 mm **NLP47**
Oblong (w/ hole) - 1,000/roll



3M Leap III

3M adhesives are world renowned for their technology. This pad has broad applications for non-hydrophobic coated lenses.

18x28 mm **NLP13**
Oval (w/ hole) - 1,000/roll



Premier

This pad is a very stable platform due to a laminate that will not stretch. Premier is a great choice for high torque applications.

18x23 mm **NLP32R**
Rectangle - 1,000/roll



Blue

With blue "easy peel" release film, this pad has excellent adhesion properties. Its flexible construction conforms to all lens curves.

24 mm **NLP21**
Round (w/ hole) - 1,000/roll

Lens Tinting & Instruments

Lens Dye

Salem offers a wide variety of premium BPI and Shades lens tints.



BPI Super Color 9

Dye System..... T801



Lensafe lens marking remover

This acetone free lens cleaner is formulated to safely remove reference marks on all lens materials, including polycarbonate. The low evaporation rate aids Lensafe in removing the markings without the reapplication common with other cleaners on the market.

16 oz bottle **TACS-Q**

