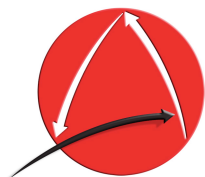
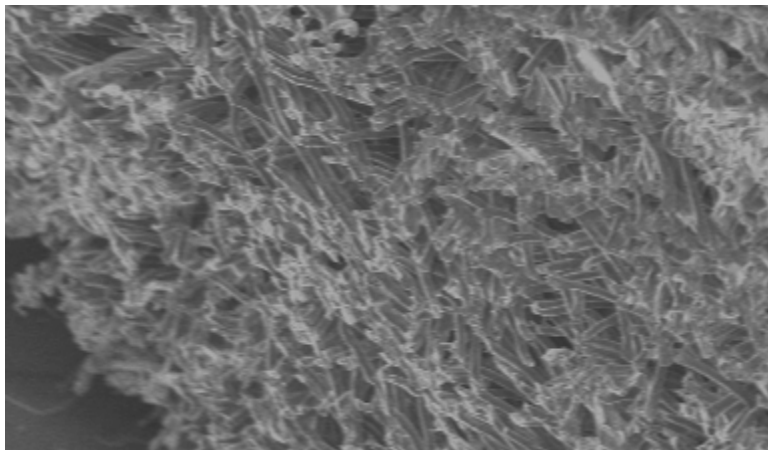




HPC50 POLISHING MATERIAL

- DESCRIPTION:** White Urethane Impregnated Fiber Based Pad for Final Polish and Lapping
- FOR USE ON:** Hard Glass And Crystal
- DUROMETER:** C Scale 80
- THICKNESS:** .050" And .150"
- DIAMETER:** Up To 53" Sheets Or Pads
- AVAILABLE IN:** Perforated Up To .050"Tk & Plain, Embossed Quotations Available Upon Request
- BACKINGS:** Easy Apply/ Remove PSA Is Standard. High Temperature PSA And Magnetic Backing Are Available Upon Request
- IMPREGNATIONS:** Abrasive Impregnated Pad Quotations Are Available Upon Request
- CAN REPLACE:** SUBA 500, IC
- PERFORMANCE:** HPC50 is our hardest pad. Still a hydrophilic pad, the HPC50 is designed for use in mechanical polishing where flatness is the highest priority. Hpc50 is still able to offer an exceptional finish quality and carry the abrasive as efficiently as our other pads. HPC50 aggressive delivery of the slurry can reduce cycle time; run process pressure and wear and tear on polishing machines while improving your average polish quality and consistency.



SALEM
Advanced Surfacing Materials

1 800-234-1982